

Patient and Visitor Services in K-Block



Admissions Area on Ground Floor of K-Block

Arriving

Metro Tasmania has information showing the bus stop closest to the Royal Hobart Hospital (RHH) from entry into the city.

There are three multi-storey carparks within a block of the RHH.

Find out more:

https://www.health.tas.gov.au/service_information/services_files/RHH/accommodation_information_handbook_rhh/parking

Patient drop off and collection points and limited parking for people with disabilities can be found around the Royal Hobart Hospital campus.

The easiest way to get to K-Block is by either the Campbell or Liverpool (main) Street entrances. While COVID-19 protections are in place, please check the Royal Hobart Hospital's webpage for more information:

https://www.health.tas.gov.au/service_information/services_files/RHH

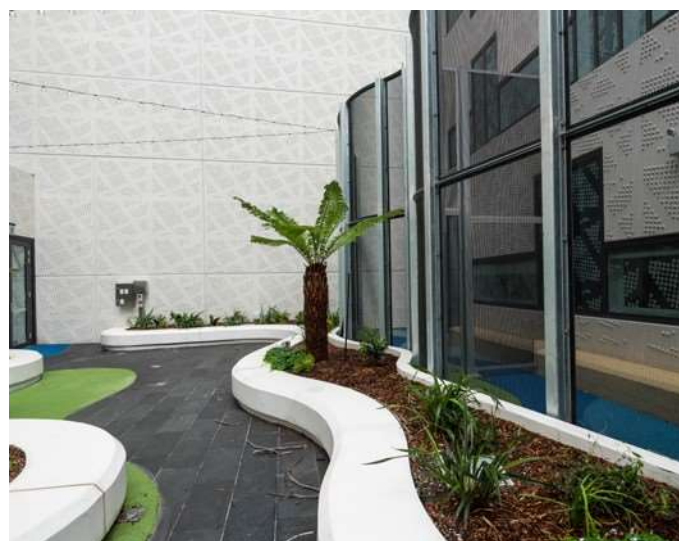
Assistance

The ground floor of K-Block is a dedicated patient arrivals and departure area that includes: reception, waiting area, cashier, admissions and transit lounge.

Volunteers are located near the waiting area of the patient arrivals and departure area on the ground floor.



Parent Room on Ground Floor of K-Block



Outdoor Terrace Area on Level 6 of K-Block

Money	There is an ATM at the end of the K-C-Block corridor.
Patient and family spaces	<p>There is more space for patients and their families within K-Block. It includes:</p> <ul style="list-style-type: none"> • outdoor terrace areas on the ground floor, mental health, children’s and adolescents’ units (levels 2, 3 and 6) • recreation areas on mental health, children’s and adolescents’ units and • parent/family areas are a key feature across the Women’s and Children’s precinct (levels 6 - 8).
Public facilities	<p>There is a disability toilet on the ground floor and on each ward in K-Block.</p> <p>There is an adult changing room on the ground floor. This is a bathroom for people whose personal care needs require more than a standard accessible toilet.</p> <p>There is a parent room on the ground floor with space for changing and feeding children.</p>
Refreshments	<p>There is a café at the front of K-Block.</p> <p>Space for vending machines has been included in each ward.</p>

For more information go to
www.rhhredevelopment.tas.gov.au

