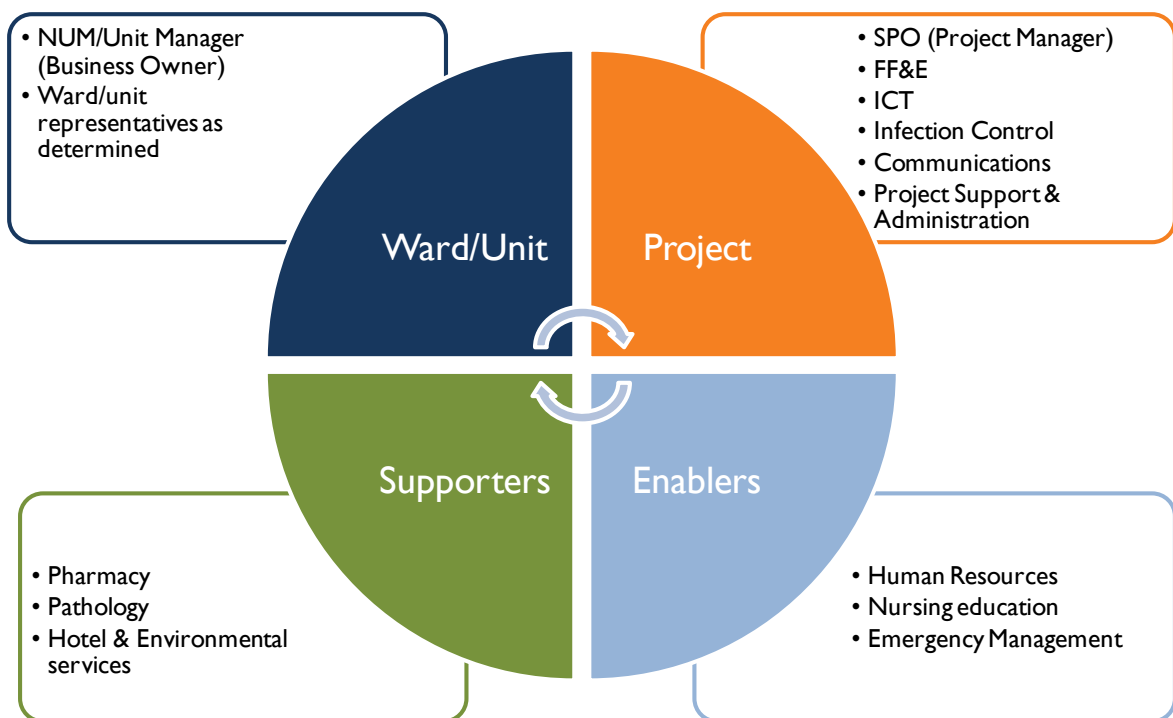


Implementing Operational Commissioning

Operational commissioning is a shared responsibility of the RHH Redevelopment and RHH. There are four functions that underpin the operational commissioning delivery structure.

1. Managing – delegated staff responsible for the management of clinical and operational areas.
2. Enabling – services that enable the smooth, structured and evidence-based delivery of the commissioning of K-Block.
3. Supporting – services that directly support the physical moves and establishment of the new clinical areas.
4. Moving – the teams and patients who are involved in relocating wards and services to K-Block.



A cross-functional delivery team (the team) will ensure a safe, efficient and planned relocation of patients and staff to K-Block.

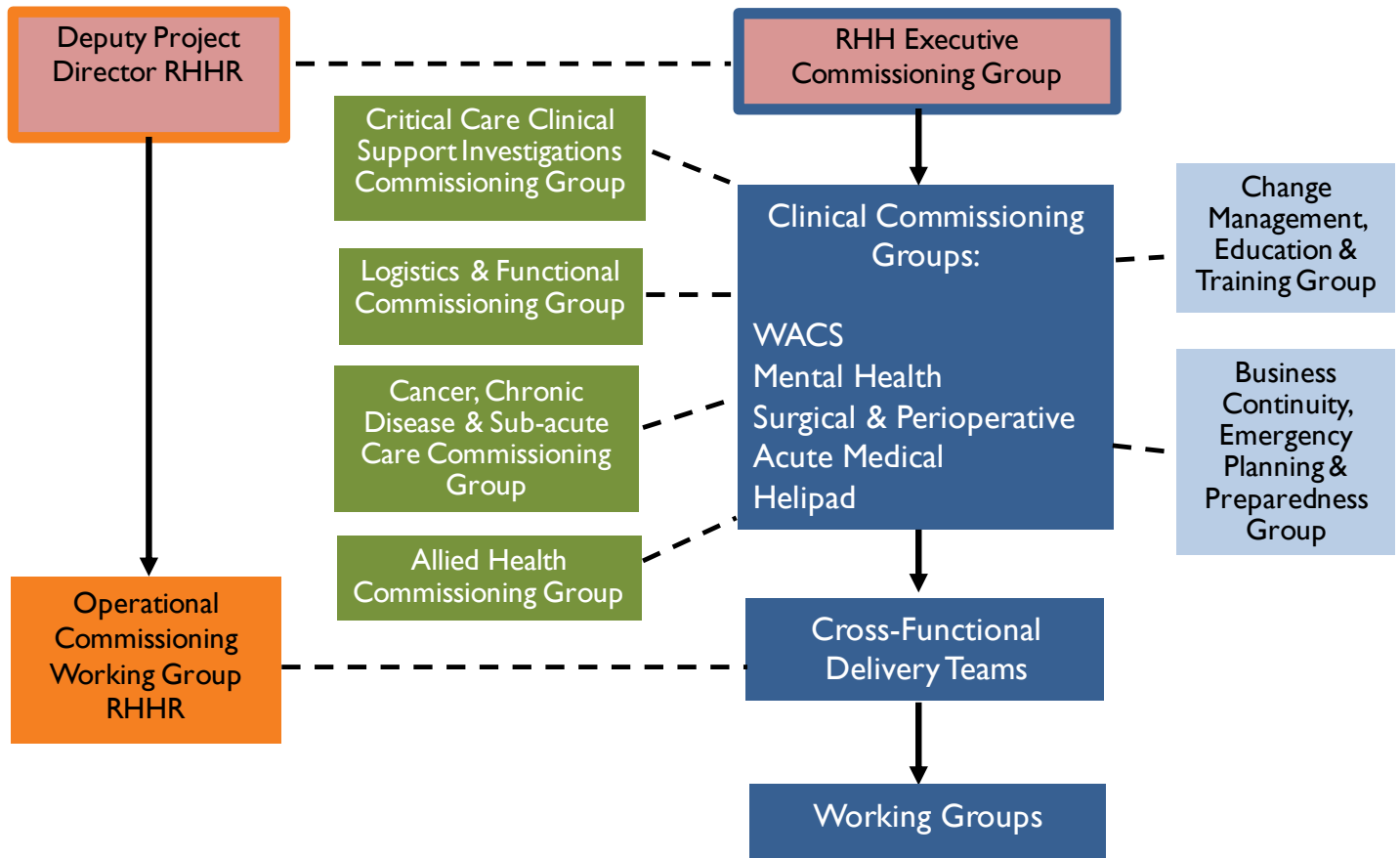
The Nurse Unit/Unit Manager is responsible for the move.

The Senior Project Officer (SPO) RHH Redevelopment team is the project manager.

The team will have representation across the four functions.

The team will be supported by ward/service working groups determined by the needs of each ward/unit.

See below for the full delivery structure.



Legend

- DoH Department of Health
- ICT Information and Communications Technology
- RHR Royal Hobart Hospital Redevelopment
- WACS Women's Adolescent's and Children's Services (RHH)